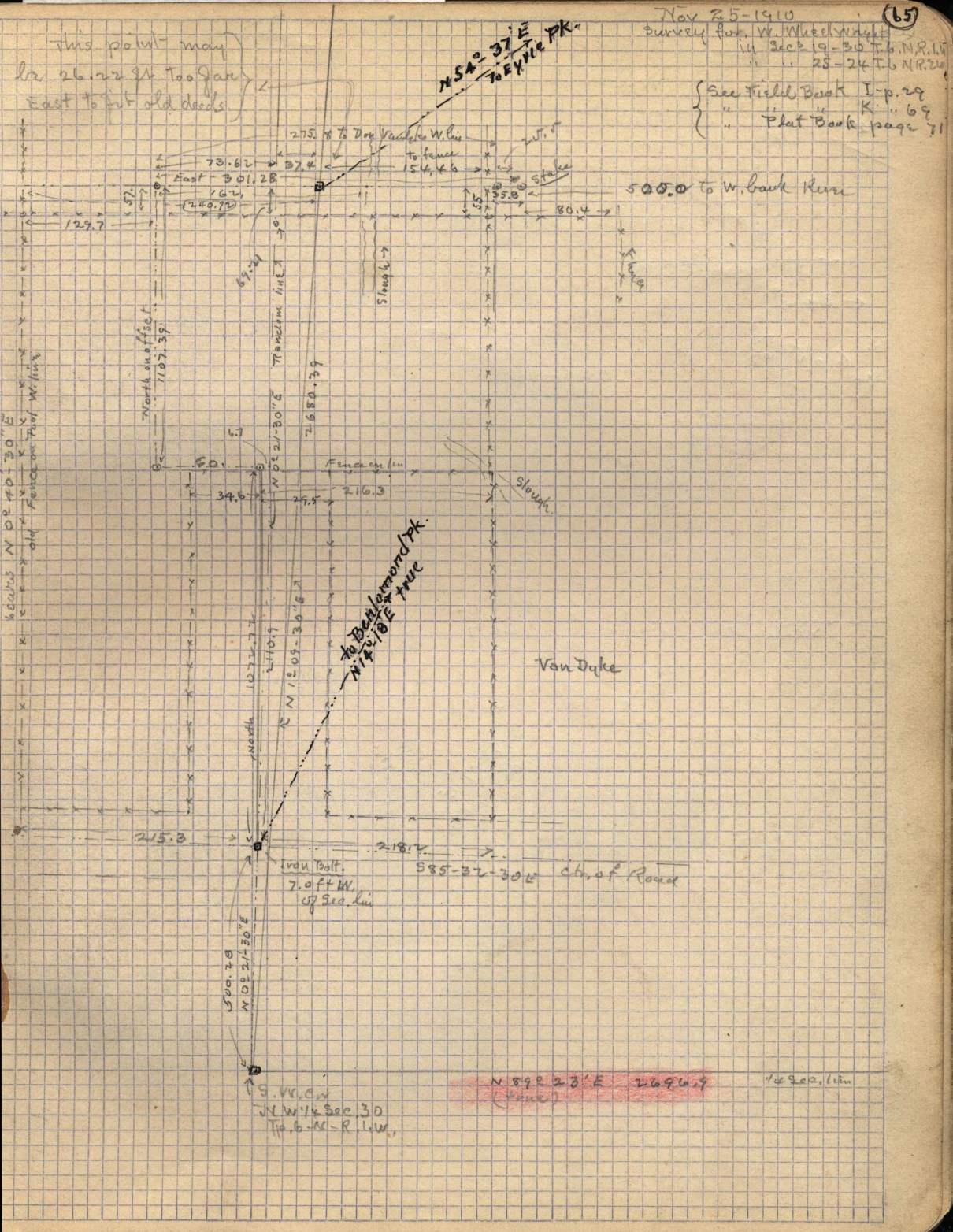


Nov 25-1910  
Turkey Run, W. Wheelwright  
1/4 Sec 19-30 T. 6 N. R. 1 W  
" " 25-24 T. 6 N. R. 2 W

this point may  
be 26.22 ft too far  
East to put old deeds

N 54° 37' E  
70 EYRE PK

{ See Field Book I-p. 29  
" " Plat Book page 71



622.15 N OR 70° 30' E  
old fence on Top of Hilling

North on offset  
107.59

N 10° 21' 30" E  
216.3

To Ben Linn road  
N 1/2 Sec 19

Van Dyke

Slough

Shrub

Stake

59.2

North  
120.70

S. V. C. W.  
N. W. 1/4 Sec 30  
T. 6 N. R. 1 W.

N 59° 23' E 269.69  
(same)

1/4 Sec. line

500.0 to W. bank here

275. x To Dog Vaneck W. line  
to fence  
15.4, 4.6

73.62  
East - 301.28  
162  
(240.70)

129.7

80.4

34.6

29.5

216.3

218.7

585-32-302 Chief Road

Iron Bolt.  
7.0 ft W.  
of Sec. line

500.28  
N 10° 21' 30" E

S. V. C. W.  
N. W. 1/4 Sec 30  
T. 6 N. R. 1 W.